

“Most dentists don’t prepare deep enough.”



Ceramic crowns often fracture because the preparation is not deep enough. Komet has followed up on this, and included special depth markers in its portfolio which specifically address this issue. We spoke to dentist Dr. Jürgen Wahlmann and master dental technician Arnold Drachenberg about the new PrepMarkers, which represent a win-win situation for both sides.

Dentists and dental technicians operate in a classic customer-supplier relationship. Does this occasionally lead to problems?

Drachenberg: Normally, an exchange should

take place on equal terms and criticism should be possible in both directions. Unfortunately this is not always the case.

Why should the placement of simple orientation grooves with preparation diamonds, which has been practised for decades, no longer be adequate?

Wahlmann: First of all, a lot of dentists no longer work like this. And secondly, it is technically impossible to cover the entire central fissure with conventional instruments. Some prepare too deep, others not deep enough. The PrepMarker helps both groups. If the preparation is too deep, the biological costs increase, and the risk of preparation trauma increases enormously. If too little is

removed, this results in chipping. It is all about finding the right balance. When I used the PrepMarker for the first time, I was surprised to see how much was really marked. On the first course where I used the PrepMarker, all the participants were amazed at how much 1.0 or 1.5 mm really represent in occlusal marking.

Are the PrepMarkers becoming more important these days as ceramic materials are becoming more widespread?

Drachenberg: Yes, that is correct. Metallic restorations can be quite forgiving, but ceramic restorations have no tolerance for errors.

What are your experiences from the laboratory side? What did the first preparations made with a PrepMarker look like?

Drachenberg: When I saw the first preparation made with the aid of a PrepMarker, one thing was clear to me: this is something different. A very uniform reduction in substance and thus the best pre-conditions for a long-lasting ceramic restoration.

For which preparations are PrepMarkers useful?

Wahlmann: The four PrepMarkers seem to have great potential. They are suitable for all buccal, vestibular, occlusal and oral depth markings. Not only do they provide greater reliability for crowns, but also for partial crowns, inlays, onlays, tabletops and veneers. And it is always the same procedure, regardless of the restoration. If required,

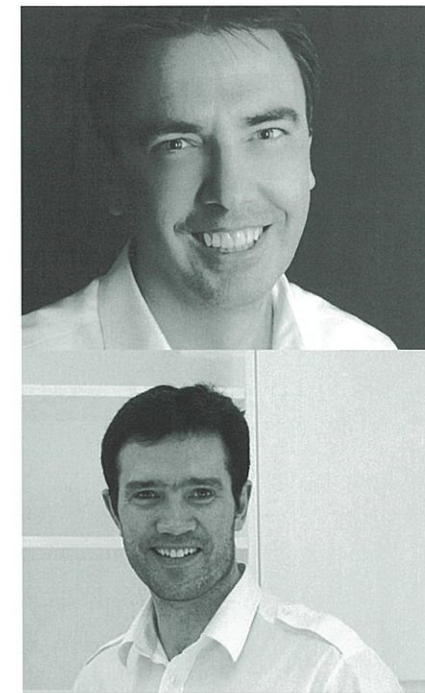
the central fissure and the area to be prepared are marked prior to preparation.

Dr. Jürgen Wahlmann

President of the German Society for Cosmetic Dentistry (DGKZ), Practicing dentist at his own dental practice in Edewecht, Germany, since 1989.

DMT Arnold Drachenberg

Master Dental Technician with his own laboratory in Windhagen



PrepMarker Set 4663

